




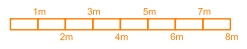


-  Uhr
Bauhöhe = 2.20m
-  Bildschirm
-  Bildschirm 103"
Bauhöhe = 3.35m

 Sperrfläche =
Platz freihalten für
Bildschirmansicht

 Garderobe flexibel
kann ein- und aus-
gebaut werden



congress center | basel

FEL 2014
25. - 29. August 2014

Foyer 2. Stock
Ausstellung

Plan Nr: CCB 490
Mst: 1:200
Format: A3
Gezeichnet: 28.08.12 / svb
Geändert: 04.08.14 / svb

gzhou

kong

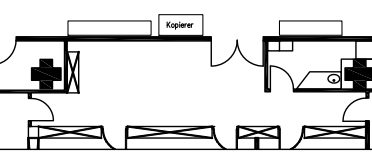
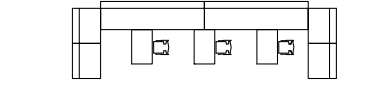
max.4.00m height/Höhe

max.3.30m height/Höhe

max. 3.05m height/Höhe

max. 2.30m height/Höhe

Registration u. Information



Terrasse

Foyer

Posterausstellung
(102 Poster)

Buffet

Buffet

Buffet

22a UVT DES. 2.00
22 SENIS 2.00

21a PIMICOS 2.00

21 BERGOZ 3.00

20 RADIABEAM 4.00
20a ALCA TECHN. 3.00

7 AMPLITUDE 2.00

8 MITSUBISHI 3.00

9 SIGMAPHI 4.00

10 BUCKLEY Sys. 3.00

11 NEWPORT 2.00

12 LUVATA 2.00

13 TYDEX 3.00

14 MEWASA 2.00

15 SAES Gaskets 4.00

16 CAEN Electr. 3.00

17 COSLAB 4.00

18 STANGENES 2.00

19 MITUTOYO 4.00

23 EDWARDS 3.00

24 TEL. Mech. 3.00

25 NEOMAX 3.00

26 VDLETG 3.00

36 INSTR. TECHN. 3.00

35 LASERZOO 2.00

33 AEROTECH 2.00

34 STRUCK 2.00

32 TOSHIBA 2.00

31 DIVTELS 3.00

30 APPL. DIAMOND 3.00

29 OERLIKON LEVOLD 2.00

28 BRUKER 3.00

27 IVOXIS 2.00

42 CMLENG INC. 4.00

43 MEGA Ind. 2.00

41 TIYAMA 2.00

40 RELEC ALLEN 2.00

